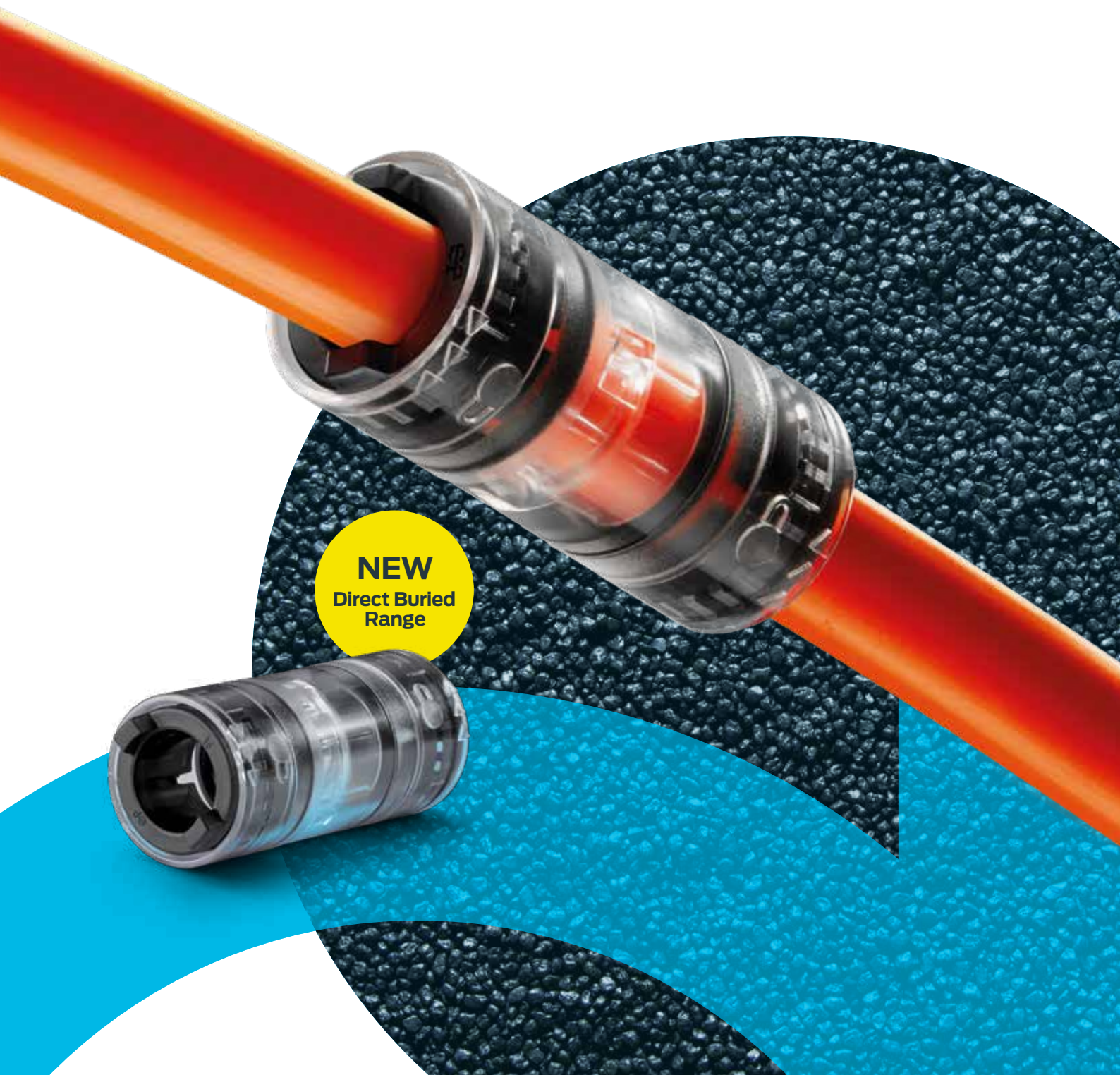


Push-fit solutions for **Blown Fibre & Cable Systems**



NEW
Direct Buried
Range

Contents

Welcome to our comprehensive range of fittings and components for air blown optical fibre microduct installations.



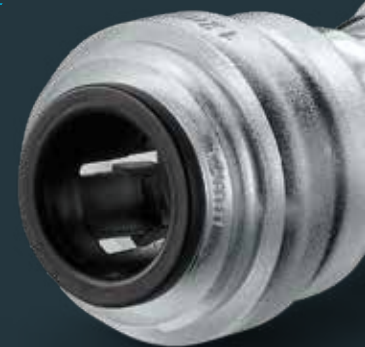


One family of brands	4
Pioneering blown fibre connector technology	6
Blown Fibre Direct Buried	
Unmatched strength in a slimline design	8
Blown Fibre Direct Buried connectors	9
Inside Direct Buried technology	10
Blown Fibre Protected	
Simple push-fit action for a secure connection	12
Blown Fibre Protected connectors and fittings	14
Price list	
Price listings for our range	18
Key information	20



One family

Reliance Worldwide Corporation (RWC) and its family of brands transform the way pipe connections are made across the globe for a diverse range of sectors such as telecoms, compressed air & pneumatics, plumbing & heating, drinks dispense and automotive.



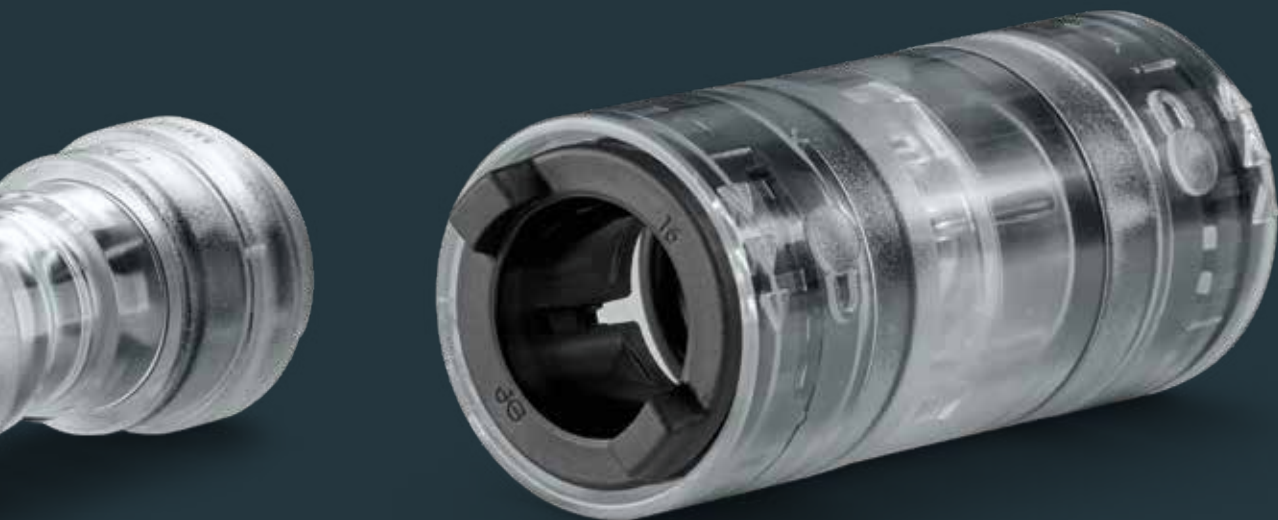
of brands

Millions of connections made worldwide

Both market leaders and niche players have been using our push-fit technology for more than five decades to solve the key challenges they face. Why? Because the clever science behind our solutions ensure optimal performance, while providing fast, simple and reliable installation.

Precision engineering and world-class quality

Innovative design is at our core. It means clever, time-saving solutions for you, engineered with lasting quality you can rely on. From state-of-the-art R&D to world-class product testing and quality control, our innovations are the by-product of pure engineering mastery. The same ethos drives our design and customer service, ensuring we provide expert support whenever you need it.





Pioneering blown fibre connector technology

Having developed the first push-fit fitting for use in blown fibre and cable pressurisation systems over three decades ago, today around 2.5 million John Guest fittings are made and sold each year. They help to deliver high-speed internet to millions of homes and offices, with some of our latest technologies achieving the industry first 30J impact resistance.

Ultimate performance

Developed for extreme temperatures and built to perform in tough conditions, our direct buried and protected ranges securely seal onto the microduct tube, providing a clear pathway for fibre bundle or cable passage.

High-impact resistance

Designed to withstand higher crush loads, some of our blown fibre ranges feature components capable of going beyond the industry standard for high impact resistance, giving you peace of mind that the system will remain intact underground at all times.

Smooth fibre passage

Integral to installation success, smooth fibre passage is ensured by the John Guest Blown Fibre components, engineered to eliminate snagging and in turn help avoid installation complications.

Efficiently tool-free

Featuring a collet with stainless steel teeth, the John Guest Blown Fibre fittings are designed to provide a secure connection with a simple push-fit action. This technology eliminates the need for any tools, making the installation process efficiently straightforward.

Superior installation flexibility

In the event of repair or network expansion works, the John Guest Blown Fibre solutions are designed to provide superior installation flexibility, as the demountable feature of the connectors allows for the system to be reconfigured at any given time without damage to microduct or fitting.



**Fibre to the Home
Council Europe**



Blown Fibre Direct Buried

Unmatched strength in a slimline design

With an uncompromised passion for quality, we invest heavily in research and development to design fittings delivering world-class technical performance and second to none durability. This manifests in our latest innovation – the new John Guest Blown Fibre Direct Buried range.

Designed for tool-free, intuitive installation and seamless performance under the toughest of conditions, the Blown Fibre Direct Buried connectors help eliminate fibre/cable snagging and provide 30J impact resistance – unmatched strength packed in a slimline, transparent fitting.

NEW



Available in a range of sizes

Direct Buried Straight Connector



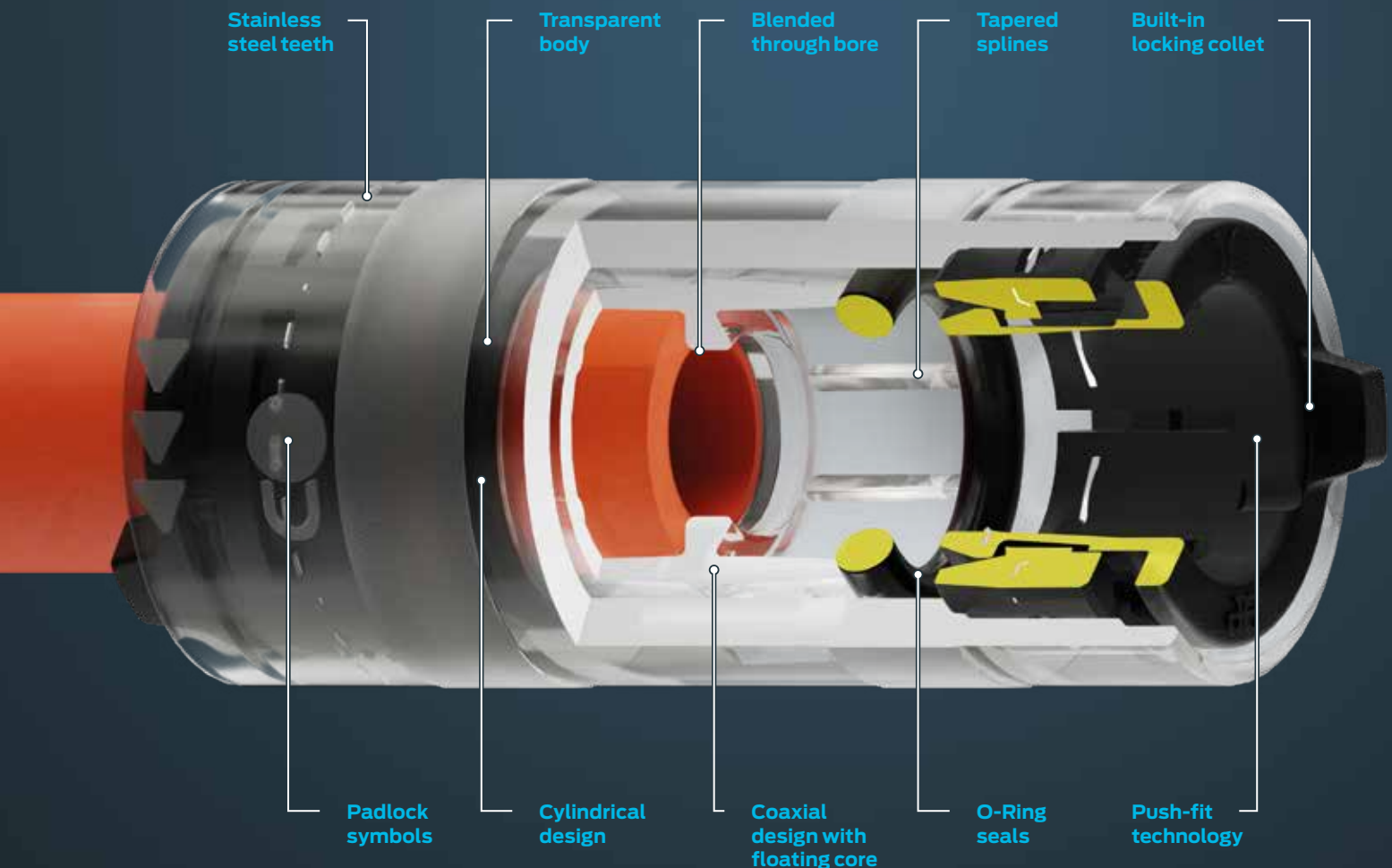
Part number	Connector size mm	Overall length* mm	Diameter mm	Through bore mm
BF0407-04	7	41	18	4
BF0408-04	8	41	18	4
BF0412-08	12	53	23	8
BF0414-10	14	59	27	10
BF0416-12	16	63	28	12
BF0420-16	20	77	35	16

*Not including collet tabs.

Blown Fibre Direct Buried

Inside Direct Buried technology

The compact body of the connector is packed with innovation. The push-fit fitting uses grip and seal technology, where a collet with stainless steel teeth grips the pipe, while the O-Ring provides an airtight seal.

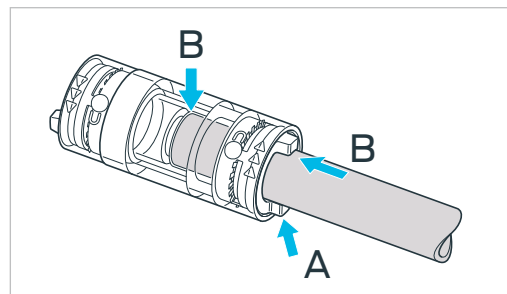




John Guest®

- **Stainless steel teeth** securely lock microduct in place
- **Transparent body** makes it easier to check fibre passage within the connector
- **Blended through bore** ensures smooth fibre passage and eliminates snagging
- **Tapered splines** help round and centralise oval microducts, further eliminating snagging
- **Built-in locking collet** comes pre-locked, enabling instantly secure pipe connection
- **Padlock symbols** indicate pipe lock/unlock positions
- **Cylindrical design** withstands higher impact as it has no crush load points
- **Coaxial design with floating core** allows for 30J impact resistance at -5°C
- **O-Ring seals** enhance connection integrity
- **Push-fit technology** ensures swift tool-free installation

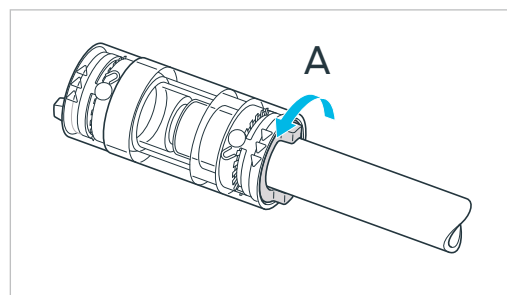
Connecting microduct



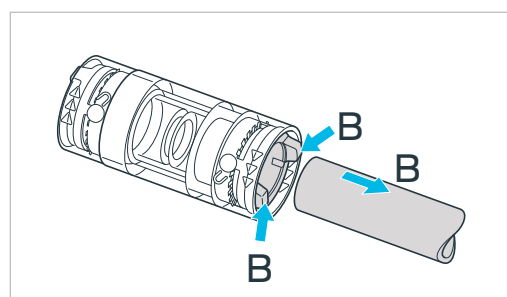
A – Connectors are supplied in the locked position, ready to use.

B – Push the microduct in all the way to the stop wall.

Removing microduct



A – Twist the collet anti-clockwise until it clicks and stops.



B – Push the collet down into the connector and pull the microduct away.

Fitting
the Future™



Blown Fibre Protected **Simple push-fit** action for a secure connection

Engineered for utmost performance in protected environments, the John Guest Blown Fibre Protected range is designed to provide an instant grip and seal onto the microduct pipe, ensuring a secure and durable connection at any point.

With built-in push-fit technology, the system can be reconfigured at any time, while the strength of the connection is further enhanced by the air-tight properties of the internal O-Ring seals.

Features

- Push-fit technology ensures swift tool-free installation
- Collet with stainless steel teeth securely locks microduct in place
- O-Ring seals enhance connection integrity

Benefits

- Tool-free connection allows for straight forward installation
- Instant grip saves time and offers peace of mind
- System can be reconfigured without damage to microduct or fitting
- Fibre/cable can be blown from either direction

For product installation steps,
visit johnquest.com



Blown Fibre Protected Straight connectors

Utilising John Guest push-fit technology, this range of connectors is used to join microduct pipe. Pipe ID is nominal.

All black bodied connectors provide the benefit of improved UV protection.

Clear Bodied Double O-Ring Seal



Part number	Pipe OD/ID mm	Pipe OD/ID mm	Through bore mm
NC621	5/3.4	- 5/3.4	3.4
NC674	8/6.4	- 5/3.4	3.4
NC673	8/6.4	- 8/6.4	6.4

Clear Bodied Single O-Ring Seal



Part number	Pipe OD/ID mm	Pipe OD/ID mm	Through bore mm
NC2352	10/8.5	- 10/8.5	8.5
NC2647	12/8	- 12/8	8
NC2458	12/9.5	- 12/9.5	9.5

Clear Bodied Single O-Ring Seal Slimline



Part number	Pipe OD/ID mm	Pipe OD/ID mm	Through bore mm
NC2687	7/3.5	- 5/3.5	3.4
NC2697	10/8	- 10/8	8
NC2696	12/10	- 12/10	10
NC2686	14/12	- 12/10	10

Single O-Ring Seal



Part number	Pipe OD/ID mm	Pipe OD/ID mm	Through bore mm
NC2129	3/2.2	- 3/2.2	2.2
NC2329	5/3.7	- 3/2.2	2.2
NC2692	5/3.5	- 5/3.5	3.5

Black Bodied Single O-Ring Seal



Part number	Pipe OD/ID mm	Pipe OD/ID mm	Through bore mm
LM0403E	3/2.2	- 3/2.2	2.2
NC2570	4/2.8	- 3/2.2	2.2
LM0404E	4/3.4	- 4/3.4	2.2
PM0405E	5/3.4	- 5/3.4	3.4
PM0406E	6/4.8	- 6/4.8	4.8
NC2757	6/4.8	- 6/4.8	4.8
PM0408E	8/6.3	- 8/6.3	6.3
PM0410E	10/7.6	- 10/7.6	7.6
PM0412E	12/8.6	- 12/8.6	8.6
PM0418E	18/16	- 18/16	16

Black Bodied Single O-Ring Seal Unequal



Part number	Pipe OD/ID mm	Pipe OD/ID mm	Through bore mm
NC2558	6/3.5	- 3/2.2	2.2

Black Bodied Single O-Ring Seal Reducing



Part number	Pipe OD/ID mm	Pipe OD/ID mm	Through bore mm
PM200604E	6/4.8	- 4/2.5	2.5
PM200804E	8/6.3	- 4/2.5	2.5
PM200806E	8/6.3	- 6/4.8	4.8
PM201004E	10/7.6	- 4/2.5	4.8
PM201006E	10/7.6	- 6/4.8	4.8
PM201008E	10/7.6	- 8/6.3	6.3
PM201208E	12/8.6	- 8/6.8	6.3
PM201210E	12/8.6	- 10/7.6	7.6

Black Bodied Single O-Ring Seal Collet Cover



Part number	Pipe OD/ID mm	Pipe OD/ID mm	Through bore mm
NC2764	8/4	- 8/4	4
NC2778	16	- 12	12

Equal Straight Connector



Part number	Pipe OD/ID mm	Pipe OD/ID mm	Through bore mm
PEM0420W	20/17.6	- 20/17.6	17.6

End stops

End Stop Superseal



Part number	Pipe OD mm
-------------	------------

NC711-02	5
NC712-02	8

Black End Stop



Part number	Pipe OD mm
-------------	------------

NC2284	3
NC2576	4
NC753	5
NC2761	6
PM4618E	18

Black End Stop Collet Cover



Part number	Pipe OD mm
-------------	------------

NC2763	8
--------	---

Coloured End Stop



Part number	Pipe OD mm
-------------	------------

PSE4610W	10
PM4612E	12
PM4615E	15
PSE4616W	16

End Stop Superseal



Part number	Pipe OD mm
-------------	------------

NC2656	7
NC2520	14

Reducers & enlargers

Reducer & enlargers can be used in conjunction with water and gas block connectors.

Enlarger



Part number	Stem OD/ID mm	Pipe OD/ID mm	Through bore mm
PMI30405E	4/2.5 -	5/2.5	2.5
NC843	5/3.0 -	8/3.0	3.0

Reducer



Part number	Stem OD/ID mm	Pipe OD/ID mm	Through bore mm
PM060504E	5/2.5 -	4/2.5	2.5
PM060605E	6/4.0 -	5/3.4	3.4
PM060805E	8/3.4 -	5/3.4	3.4
NC2734	8/5.5 -	7/5.5	5.5

Blown Fibre Protected Gas block connectors

Provides a simple and effective gas seal between the pipe and the fibre bundle or mini cable, eliminating the need for sealing resin. The connector through bore provides uninterrupted passage for blown fibre/mini cable.

Pipe ID is nominal.

Colours available – Suffix indicates colours
GB = Green BB = Blue RB = Red

Superseal



Part number	Pipe OD/ID mm	Pipe OD/ID mm	Gas blocking range Ømm
GB-55-01	5/3.5	- 5/3.5	0.9-2.5
GB-85-01	8/6.3	- 5/3.5	0.9-2.5
GB-88-01	8/6.3	- 8/6.3	0.9-4.5

Ring Type - Squeeze To Release



Part number	Pipe OD/ID mm	Pipe OD/ID mm	Gas blocking range Ømm
NC2525	4/2.2	- 4/2.2	0.9-1.2
NC2559	6/2.7	- 3/2.2	0.9-1.2
NC2526	6/2.7	- 4/2.2	0.9-1.2
NC2676	6/2.7	- 6/2.7	1.4-1.6
NC2728	8.5/6	- 8.5/6	TBA

Transparent Body



Part number	Pipe OD/ID mm	Pipe OD/ID mm	Gas blocking range Ømm
NC2657GB	7/3.5-4	- 7/3.5-4	1.0-1.6
NC2657RB	7/3.5-4	- 7/3.5-4	1.8-2.4
NC2657BB	7/3.5-4	- 7/3.5-4	2.4-3

Peg Type



Part number	Pipe OD/ID mm	Pipe OD/ID mm	Gas blocking range Ømm
NC2670RB	14/10	- 14/10	6.5-7.2
NC2670BB	14/10	- 14/10	7.6-8.2

Peg Type - Squeeze To Release



Part number	Pipe OD/ID mm	Pipe OD/ID mm	Gas blocking range Ømm
NC2689GB	10/8	- 10/8	5.5-6.6
NC2689RB	10/8	- 10/8	6.6-7.2
NC2690GB	12/10	- 12/10	5.5-6.6
NC2690RB	12/10	- 12/10	6.6-7.2
NC2690BB	12/10	- 12/10	7.6-8.2
NC2670-02RB	14/10	- 14/10	6.5-7.2
NC2670-02BB	14/10	- 14/10	7.6-8.2

Gas Block/Fibre Lock

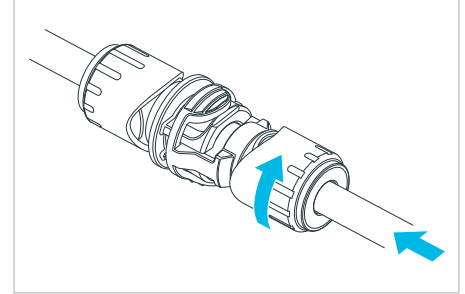


Part number	Pipe OD/ID mm	Pipe OD/ID mm	Gas blocking range Ømm
NC2524	3/2.2	- Fibre lock	0.9-1.2

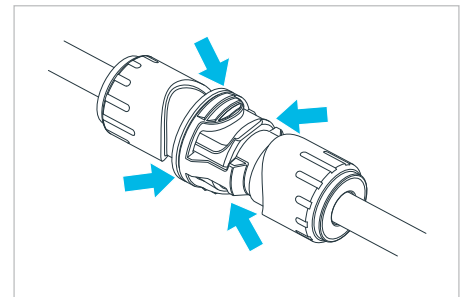
Connecting push-fit

The gas block connectors utilise John Guest push-fit technology allowing gas blocking connections to be made simply without the need for tools.

Making the push-fit connection



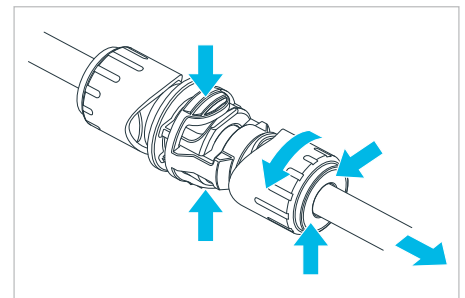
Push the pipe into connector, up to pipe stop. Twist locking cover 1/4 turn clockwise to prevent accidental pipe release (cover aligns with profile on body).



Firmly push the opposing ends of connector together, until latched, activating internal gas blocking mechanism.

Demounting push-fit

Demounting push-fit fittings



To release the pipe twist the locking cover 1/4 turn anti-clockwise, push the collet square against the face of the connector, then remove the pipe (cover misaligns with profile on body). Depress yellow catch to release gas block.

Bulkhead connectors

Threaded Connectors



Part number	Pipe OD mm	Through bore mm
PM1204E	4	2.5
PM1205E	5	3.4
PM1206E	6	4.8
PM1208E	8	5.8
PM1210E	10	7.6
PM1212E	12	8.6

Snap-Fit Connector



Part number	Pipe OD/ID mm	Pipe OD/ID mm	Through bore mm
NC2113	5/3.4	-	5/3.4

For Ø12.5mm mounting hole.

Close down assemblies

For centre blowing applications.

Centre Close Down Assemblies



Part number	Pipe OD mm	Through bore mm
NC558	5	5.2

Close Down 2A.

Close Down Assemblies



Part number	Pipe OD mm	Through bore mm
NC2136	3	3.2
NC2130	5	5.2

Close Down 3A.

Ribbons

12 Way Ribbon Connector - Male



Part number	Pipe OD mm	Through bore mm
NC2577-01	3	1.2

Male and Female Ribbon Connectors attach together.

12 Way Ribbon Connector - Female



Part number	Pipe OD mm	Through bore mm
NC2577-02	3	1.2

Male and Female Ribbon Connectors attach together.

Collet cover

For use with some Blown Fibre Connectors. Please confirm compatibility before purchase. Provides protection from accidental release and dirt ingress.

Collet Cover - Black



Part number	Pipe OD mm
PM1904E	4
PM1905E	5
PM1906E	6
PM1908E	8
PM1910E	10
PM1912E	12
PM1915E	15
PM1918E	18
PM1922E	22

Other colours available, please enquire.

Blown Fibre Protected Straight connectors

Clear Bodied Double O-Ring Seal



Part number	Pipe OD/ID mm		Pipe OD/ID mm	Through bore mm
NC621	5/3.4	-	5/3.4	3.4
NC674	8/6.4	-	5/3.4	3.4
NC673	8/6.4	-	8/6.4	6.4

Clear Bodied Single O-Ring Seal



Part number	Pipe OD/ID mm		Pipe OD/ID mm	Through bore mm
NC2352	10/8.5	-	10/8.5	8.5
NC2647	12/8	-	12/8	8
NC2458	12/9.5	-	12/9.5	9.5

Clear Bodied Single O-Ring Seal Slimline



Part number	Pipe OD/ID mm		Pipe OD/ID mm	Through bore mm
NC2687	7/3.5	-	5/3.5	3.4
NC2697	10/8	-	10/8	8
NC2696	12/10	-	12/10	10
NC2686	14/12	-	12/10	10

Single O-Ring Seal



Part number	Pipe OD/ID mm		Pipe OD/ID mm	Through bore mm
NC2129	3/2.2	-	3/2.2	2.2
NC2329	5/3.7	-	3/2.2	2.2
NC2692	5/3.5	-	5/3.5	3.5

Black Bodied Single O-Ring Seal



Part number	Pipe OD/ID mm		Pipe OD/ID mm	Through bore mm
LM0403E	3/2.2	-	3/2.2	2.2
NC2570	4/2.8	-	3/2.2	2.2
LM0404E	4/3.4	-	4/3.4	2.2
PM0405E	5/3.4	-	5/3.4	3.4
PM0406E	6/4.8	-	6/4.8	4.8
NC2757	6/4.8	-	6/4.8	4.8
PM0408E	8/6.3	-	8/6.3	6.3
PM0410E	10/7.6	-	10/7.6	7.6
PM0412E	12/8.6	-	12/8.6	8.6
PM0418E	18/16	-	18/16	16

Black Bodied Single O-Ring Seal Unequal



Part number	Pipe OD/ID mm		Pipe OD/ID mm	Through bore mm
NC2558	6/3.5	-	3/2.2	2.2

Black Bodied Single O-Ring Seal Reducing



Part number	Pipe OD/ID mm		Pipe OD/ID mm	Through bore mm
PM200604E	6/4.8	-	4/2.5	2.5
PM200804E	8/6.3	-	4/2.5	2.5
PM200806E	8/6.3	-	6/4.8	4.8
PM201004E	10/7.6	-	4/2.5	4.8
PM201006E	10/7.6	-	6/4.8	4.8
PM201008E	10/7.6	-	8/6.3	6.3
PM201208E	12/8.6	-	8/6.8	6.3
PM201210E	12/8.6	-	10/7.6	7.6

Connecting push-fit

Black Bodied Single O-Ring Seal Collet Cover



Part number	Pipe OD/ID mm		Pipe OD/ID mm	Through bore mm
NC2764	8/4	-	8/4	4
NC2778	16	-	12	12

Equal Straight Connector



Part number	Pipe OD/ID mm		Pipe OD/ID mm	Through bore mm
PEM0420W	20/17.6	-	20/17.6	17.6

End stops

End Stop Superseal



Part number	Pipe OD mm
-------------	------------

NC711-02	5
NC712-02	8

Black End Stop



Part number	Pipe OD mm
-------------	------------

NC2284	3
NC2576	4
NC753	5
NC2761	6
PM4618E	18

Black End Stop Collet Cover



Part number	Pipe OD mm
-------------	------------

NC2763	8
--------	---

Coloured End Stop



Part number	Pipe OD mm
-------------	------------

PSE4610W	10
PM4612E	12
PM4615E	15
PSE4616W	16

End Stop Superseal



Part number	Pipe OD mm
-------------	------------

NC2656	7
NC2520	14

Reducers & enlargers

Reducer & enlargers can be used in conjunction with water and gas block connectors.

Enlarger



Part number	Stem OD/ID mm	Pipe OD/ID mm	Through bore mm
PMI30405E	4/2.5 -	5/2.5	2.5
NC843	5/3.0 -	8/3.0	3.0

Reducer



Part number	Stem OD/ID mm	Pipe OD/ID mm	Through bore mm
PM060504E	5/2.5 -	4/2.5	2.5
PM060605E	6/4.0 -	5/3.4	3.4
PM060805E	8/3.4 -	5/3.4	3.4
NC2734	8/5.5 -	7/5.5	5.5





cunha  mendes cunha, lda
Equipamentos Industriais

email:cmc@cmc.pt

web:www.cmc.pt

